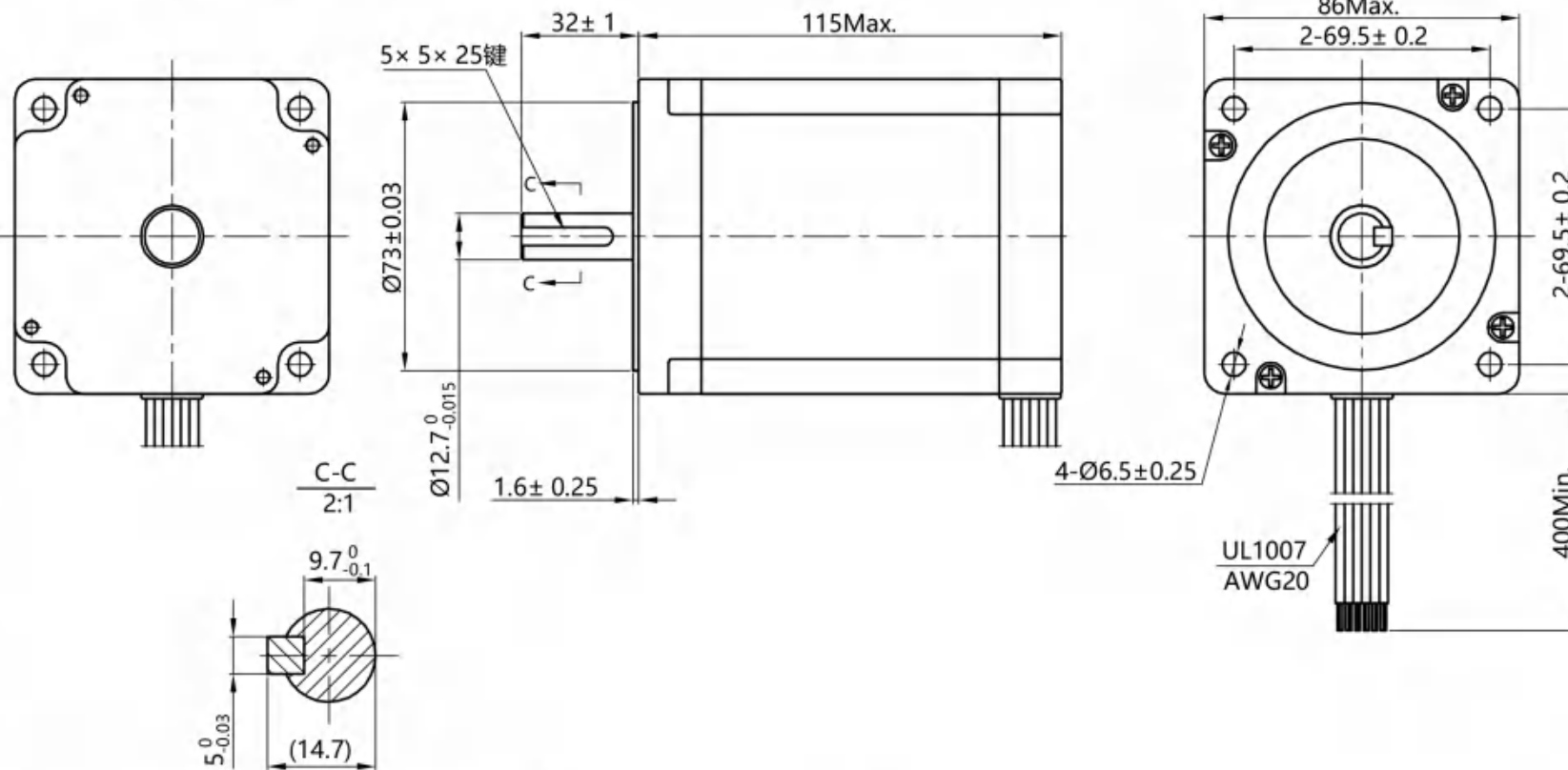
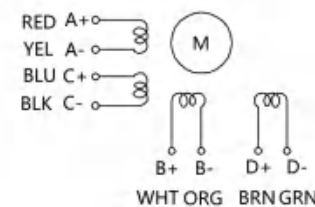


HYBRID STEPPING MOTOR SPECIFICATION

(DIMENSIONS) unit=mm



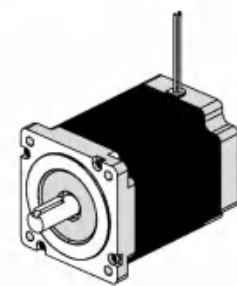
Wiring Diagram



Exciting Sequence vs. Direction of Rotation

STEP	A	B	C	D	
1	+	+	-	-	↑ CCW ↓ CW
2	-	+	+	-	
3	-	-	+	+	
4	+	-	-	+	

Clockwise view from mounting side



1, Number of Phase	4		
2, Step Angle	1.8° deg.		
3, Wiring	PARALLEL	UNIPOLAR	SERIES
4, Rated Voltage	2.7 V	3.78 V	5.3 V
5, Rated Current/Phase	5.88 A	4.2 A	2.94 A
6, Phase Resistance	0.45 Ω	0.9 Ω	1.8 Ω
7, Phase Inductance	6 mH	6 mH	24 mH
8, Holding Torque	8.7 N.m	6.1N.m	8.7 N.m
9, Insulation Class	B (130°) ; 80K Max.		
10, Weight			

Specifications

Comment

REV.	REVISION RECORD	DATE
DESIGN		
STANDARD		
TECHNOLOGY		
CHECK		
APPROVE		

Changzhou BesFoc Motor Co., Ltd
www.besfoc.com

Specification

TITLE	STEPPING MOTOR				
DWG.NO.	BF86HS115-4208				
MATERIAL	ECN SIGN	*	SIZE	A4	
REV.	A	SCALE	1:2	SHEET	1 of 1